

FCKIT30-PS 30 Amp conversion kit installation instructions

WARNING! ELECTRICAL SHOCK AND FIRE HAZARD!

To prevent the risk of electrocution or fire, ensure the inlet and connecting cables are NOT connected to a power source during installation! Use only 10 AWG or above cable with this product. Using a smaller AWG cable will result in overheating and possible Fire Hazard.

Cable color scheme for 125V 3 core connection to inlet.

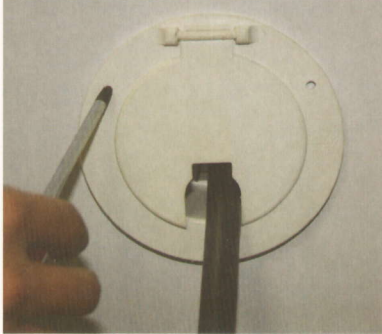
Black = X - Live/Hot Cable
White = W - Neutral Cable
Green = G - Ground Cable

Different types of furrion conversion kits installations:

A - Mouse hole conversion installation (exterior inlet conversion)

B - junction box conversion installation (interior inlet conversion)

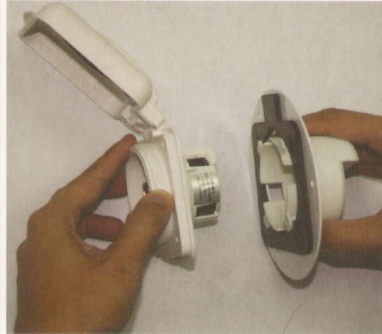
Type A: Mouse hole conversion installation (exterior inlet conversion)



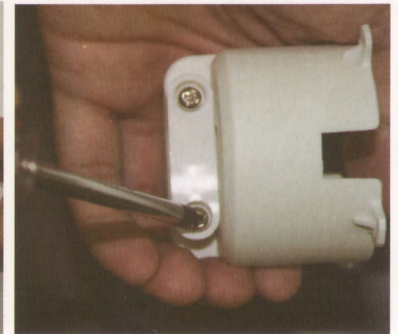
1. Remove existing mouse hole housing by unscrewing the mounting screws, prise the hatch from the RV.



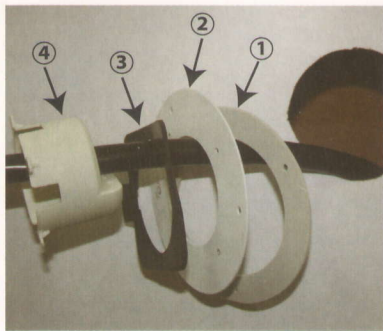
2. From the exterior, pull out the full length of power cable then cut approximately 12 -18" from the hole.



3. Remove the mounting plate and rear cover by unscrewing the 4 screws from the open front of the inlet.



4. Remove the rear strain relief from the rear cover by unscrewing.

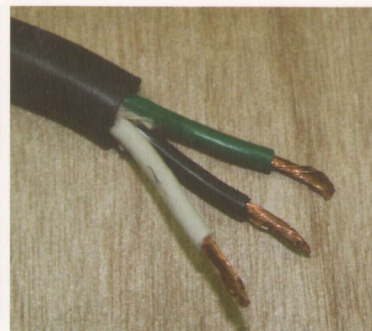


5. Feed the cable through the rear parts in the following order:

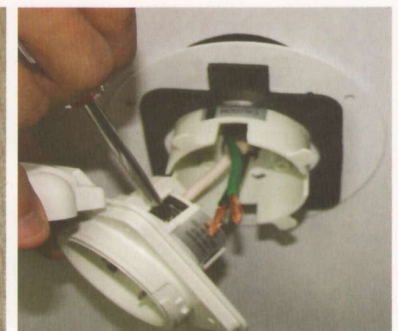
1. mounting plate gasket
2. white mounting plate
3. inlet gasket
4. rear cover



6. Push the inlet pieces up the cable leaving you plenty of cable to start step 7.



7. Strip off 1 1/2" of the outer insulation layer of the cable and 5/8" of colored insulations from the ends of your 3 colored conductor cables.



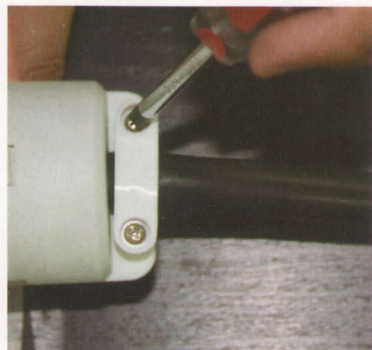
8. Using a slot head screw driver, connect the colored wires to the corresponding lettered holes on the back of the inlet, (see above for color to letter markings) taking care not to have any stray wire strands or have insulation pushed inside the terminal holes. Tighten terminal screws to 14 - 16 in.lbs torque.



9. Slide the rear cover (component #4 in step 5) back over the terminal connections so the 4 locator feet on the back cover are fully seated and flush on the back of the inlet body.



10. Using the 4 Phillips head screws provided, Tightly secure the inlet and inlet gasket to the mounting plate. Note the 'TOP' sticker on white inlet mounting plate indicates correct Inlet mounting position



11. Replace the strain relief and tighten the 2 strain relief screws on the back of the cover. Tighten screws down until cable is secure. Do NOT over tighten.



12. Using the existing holes from the Mouse hole hatch, align the mounting plate gasket and mount the inlet assembly to the RV using Stainless Steel Screws or Bolts.